

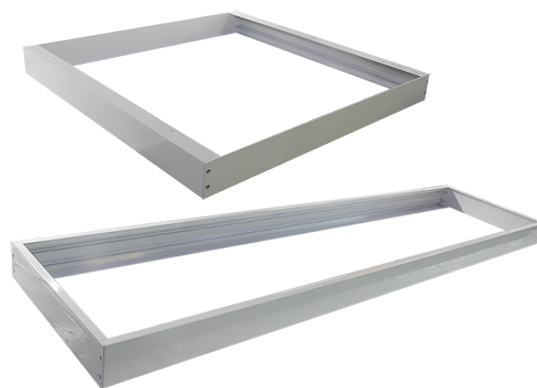
LED 2X2, 1X4, 2X4 Surface-Mount kit

Features

- Beautiful appearance
- Grilled white paint mask
- Aluminum frame
- Suitable for standard size panel lights
- One year warranty

Options

- Available in three size (1'x4', 2'x2', 2'x4')



Technical specification

Part No.	Screws	Head self-tapping	Ceiling frame	Weight(lb)	Size (inch)
RPN-FRB01	304 stainless steel	PA4*8mm	1.97" * 0.47" * 12.09" & 1.97" * 1.18" * 47.83"	2.76	47.83" * 12.09" * 2.36"
RPN-FRB02	606 stainless steel	PA3*5mm	2.09" * 0.89" * 23.98" & 2.09" * 0.37" * 23.98"	3.03	23.86" * 23.86" * 2.36"
RPN-FRB03	304 stainless steel	PA4*8mm	1.97" * 0.47" * 23.98" & 1.97" * 1.18" * 47.83"	3.42	47.83" * 23.86" * 2.36"
Body Color	White				
Body Material	Aluminum				

Installation method

- 1 Put the four peices of frame together and fix them by screws.
 - 2 Fix the frame onto the wall by screws.
 - 3 Dismantle one piece of frame and put the LED panel into the frame.
 - 4 Fix the frame by putting back the dismantled part.
- Note: The drivers and connector must be fixed to the back of LED panel by adhesive tape.

